



LEADERS FROM INDIA
TO THE WORLD

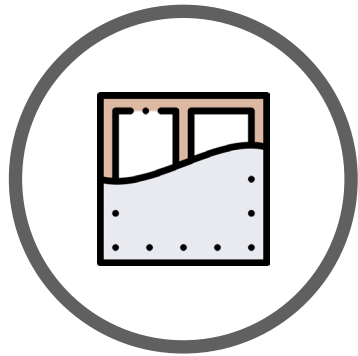




INTERARCH LIFE - BUILDING INSTALLED IN CALIFORNIA USA
COUNTRY - DIXON, CALIFORNIA
BUILDING TYPE - RESIDENTIAL BUILDING



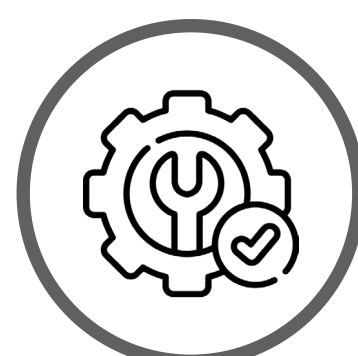
KEY FEATURES



DRY WALL INTERIOR AND
EXTERIOR FINISHES



EASY TRANSPORTATION
& HANDLING



TIME SAVING IN
CONSTRUCTION



SOLVING HIGH
LABOUR COST IN USA



EARTHQUAKE
RESISTANT



TERMITE PROOF



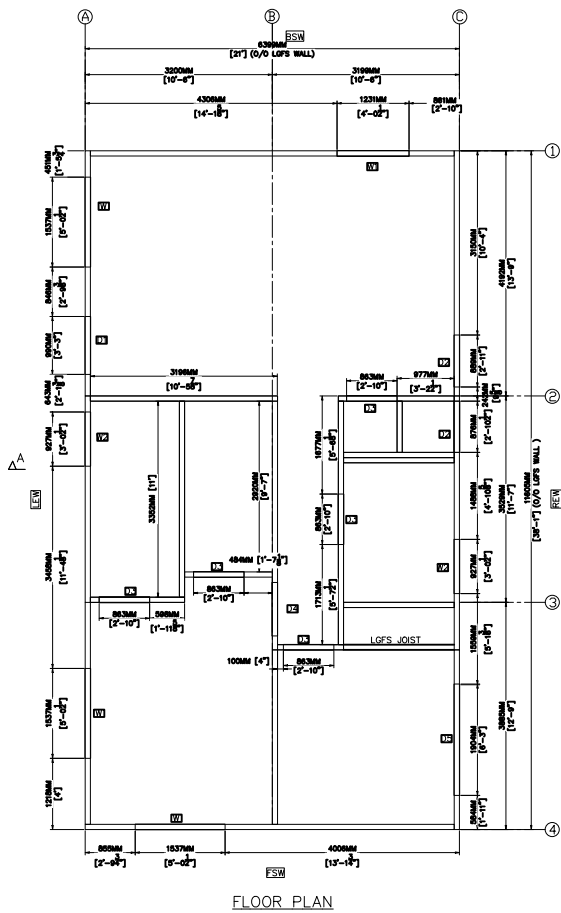
FIRE PROOF



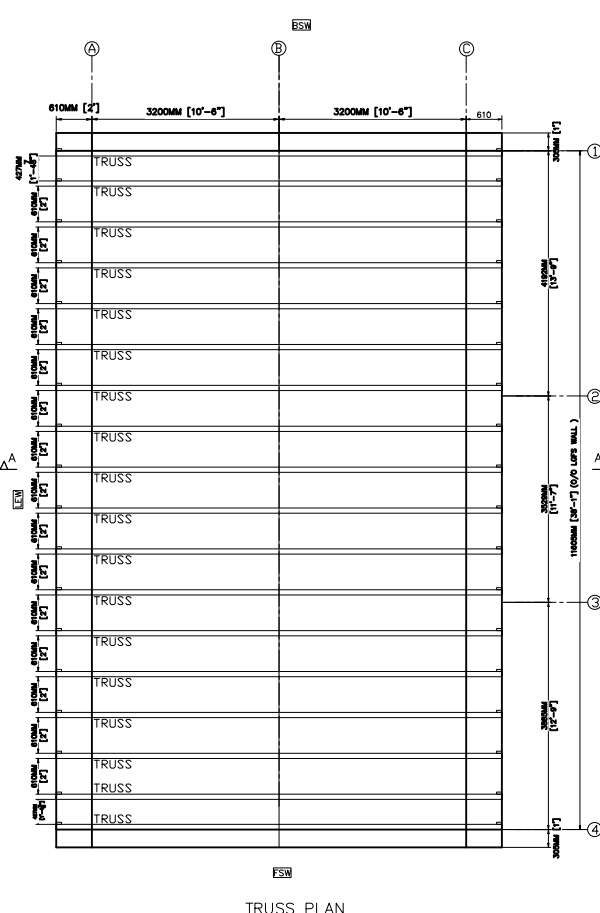
RECYCLABLE



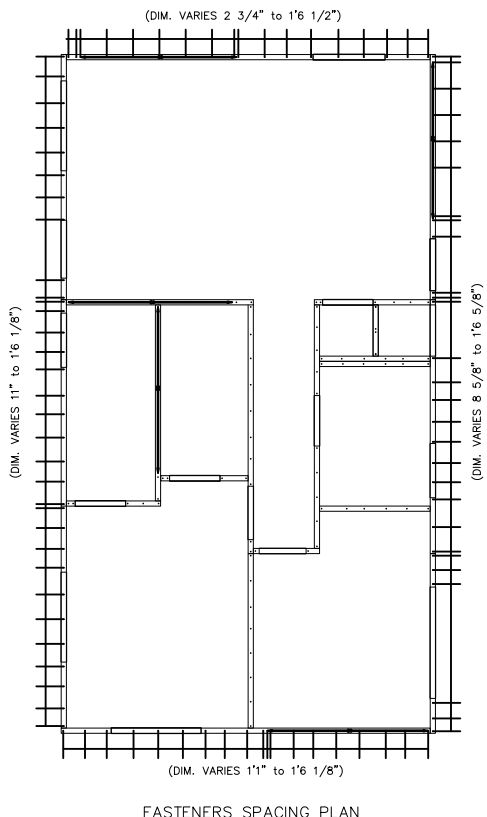
DESIGN & ENGINEERING



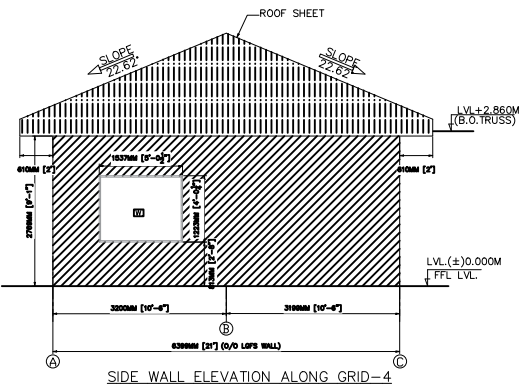
FLOOR PLAN



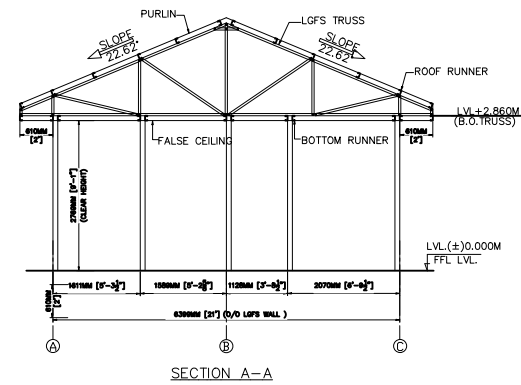
TRUSS PLAN



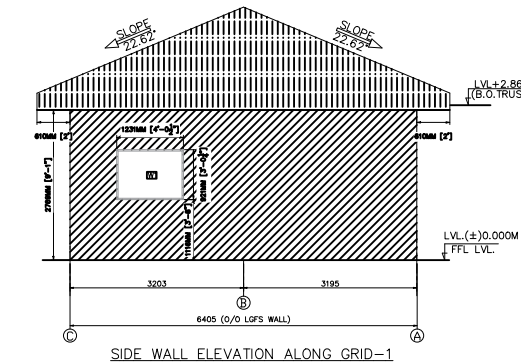
FASTENERS SPACING PLAN



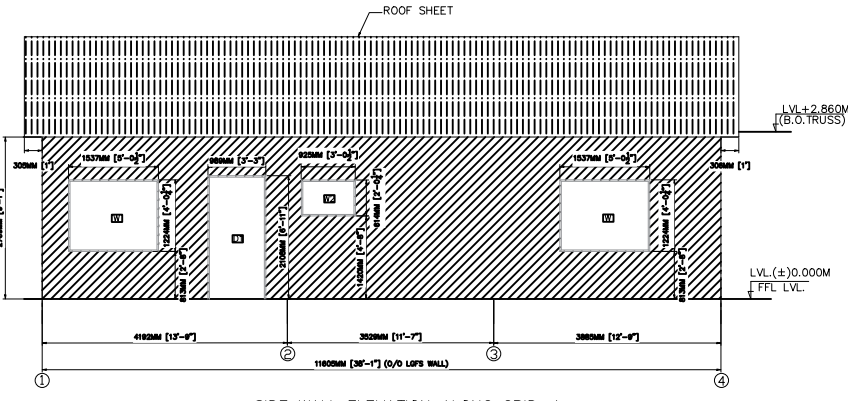
SIDE WALL ELEVATION ALONG GRID-4



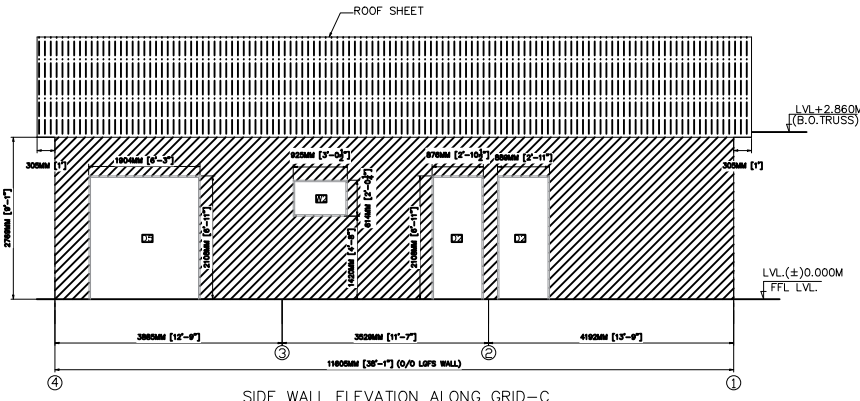
SECTION A-A



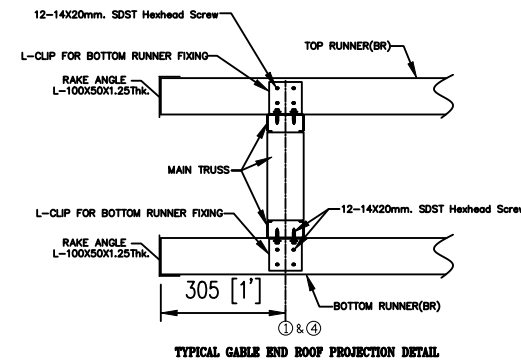
SIDE WALL ELEVATION ALONG GRID-1



SIDE WALL ELEVATION ALONG GRID-A



SIDE WALL ELEVATION ALONG GRID-C



TYPICAL GABLE END ROOF PROJECTION DETAIL



PRE-ASSEMBLED AT FACTORY



ASSEMBLED AT SITE





BUILDING INDIA

FOR MORE DETAILS CONTACT US AT

export.enquiry@interarchbuildings.com
www.exports.interarchbuildings.com